



NCCC OFFICIAL FLYER

West Region

# MID-AMERICA CORVETTE CLUB

in association with

CENTRAL KANSAS CORVETTE ASSOCIATION

presents



## 10 Low Speed Autocrosses – Open Exhaust

**Saturday @ Kansas Speedway, 400 Speedway Blvd, Kansas City, KS**

**Sunday @ GM Fairfax Assembly Plant, 3201 Fairfax Trafficway, Kansas City, KS**

EVENT	SANCTION #	DATE	REG. & TECH (CDST)	DRIVERS MTG	1st CAR OFF	LOCATION	CHAIR
Low Speed 1	WR-099-161	June 5 2010	7:30 am 9:00 am	9:15 am	15 min after Drivers Mtg	Kansas Speedway	Tim Bailey
Low Speed 2	WR-099-162	June 5 2010	7:30 am End of LS1	If Necessary	5 min after LS1	Kansas Speedway	Pat Harrison
Low Speed 3	WR-099-163	June 5 2010	7:30 am End of LS2	If Necessary	5 min after LS2	Kansas Speedway	Scott Bailey
Low Speed 4	WR-099-164	June 5 2010	7:30 am End of LS3	If Necessary	5 min after LS3	Kansas Speedway	Sean Bailey
Low Speed 5	WR-056-145	June 5 2010	7:30 am End of LS4	If Necessary	5 min after LS4	Kansas Speedway	Fred Johnson
Low Speed 6	WR-056-146	June 5 2010	7:30 am End of LS5	If Necessary	5 min after LS5	Kansas Speedway	Fred Johnson
Low Speed 7	WR-099-165	June 6 2010	7:30 am 8:30 am	9:00 am	15 min after Drivers Mtg	GM Fairfax Plant	Matt Brown
Low Speed 8	WR-099-166	June 6 2010	7:30 am End of LS7	If Necessary	5 min after LS7	GM Fairfax Plant	Bruce Hertzfield
Low Speed 9	WR-099-167	June 6 2010	7:30 am End of LS8	If Necessary	5 min after LS8	GM Fairfax Plant	Paul Yeager
Low Speed 10	WR-056-147	June 6 2010	7:30 am End of LS9	If Necessary	5 min after LS9	GM Fairfax Plant	Fred Johnson

**Costs:**

Low Speeds: \$10 Each  
 Best Deal: \$75 for all 10 races  
 Trophy: \$25 (Must Qualify)

**MACC Gov & Event Coordinator**

Tim Bailey  
 2501 Olde Creek Ct.  
 Leavenworth, KS 66048  
 (913) 651-5197

**CKCA Governor**

Fred Johnson  
 176 East Lake Drive  
 Salina, KS 67401  
 (785) 827-5322

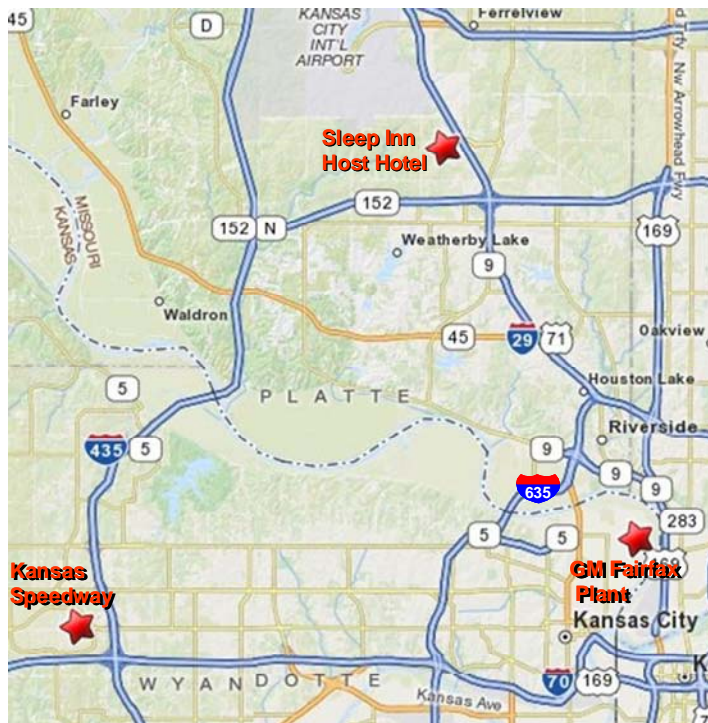
**Host Hotel:**

Sleep Inn Airport  
 \$56.00 +tax  
 7611 NW 97<sup>th</sup> Terrace  
 Kansas City, MO  
 Call (816) 891-0111 and mention  
 "Corvette Club" for the group rates.  
 Location: I-29 at Exit 10 which is near  
 Zona Rosa shopping district

**Friday night:** early tech & registration from 6-9 PM at host hotel. Hospitality room with drinks and munchies provided by MACC.

**Saturday night:** Scott Bailey will lead a group to one of his preferred eateries in the area.

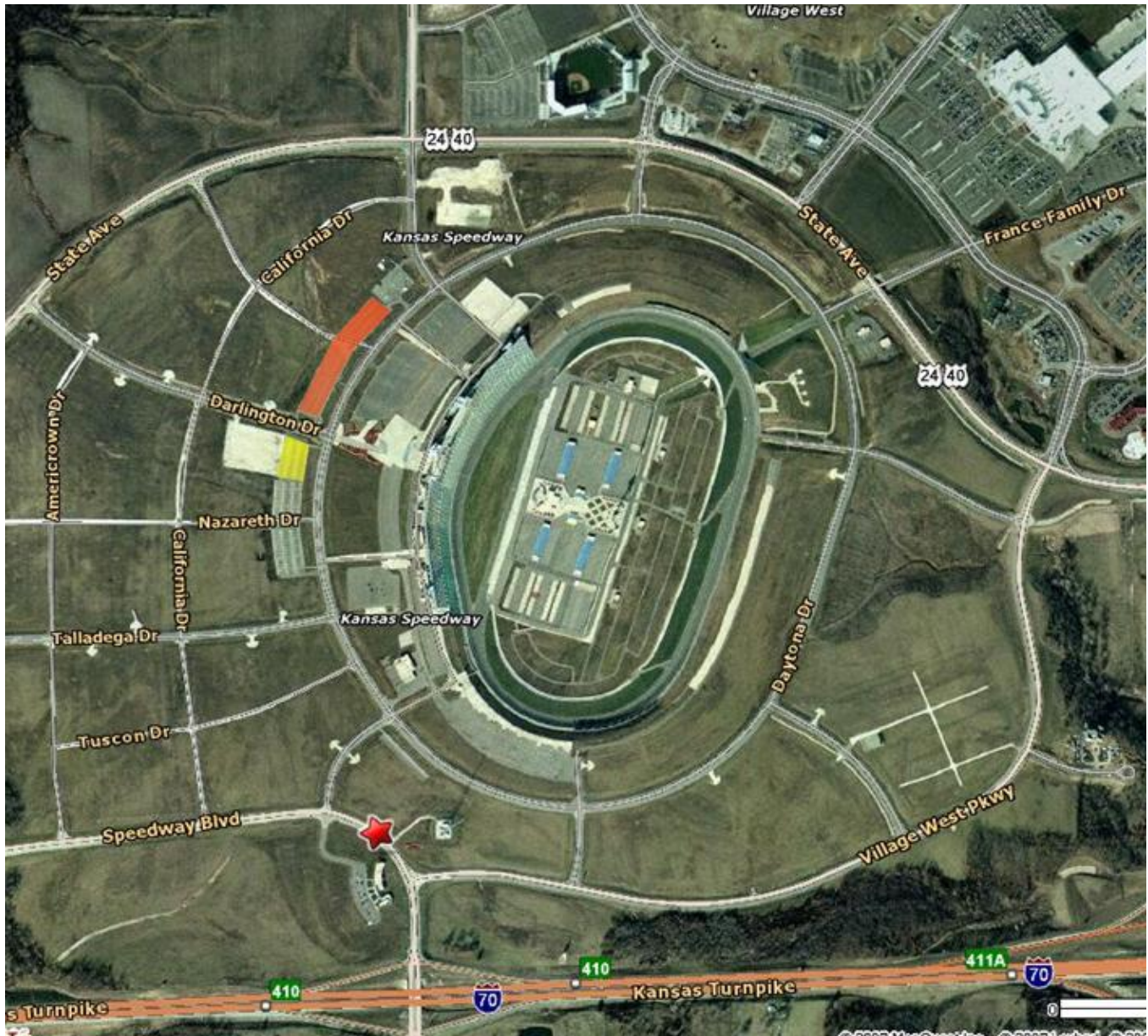
Note: trailer parking on street and side road.



**Fun runs may be held after the events are concluded**

## Directions Directly to Kansas Speedway

The most direct route is on I-70 at Exit 410, which is one exit west of I-435. Take Exit 410 and turn north, which will be right if you are coming from KC or left if you are coming from Topeka. Turn right at the 2<sup>nd</sup> opportunity, which will have a guard house with a gate. They should be expecting you and direct you to the lot we are using (highlighted in red below). The lot highlighted in yellow is the lot in which you may park tow vehicles, etc. Note: lots may change if raining.



## Directions from the Host Hotel to the Kansas Speedway

Proceed south on I-29 for approximately 0.8 mile to MO 152. Take Exit 9B west (Topeka) on MO 152 for approximately 5 miles to I-435. Take I-435 South approximately 11 miles to I-70. Take Exit 12 and bear right onto I-70 West to Topeka. Stay to the right because you want to take the very first exit for 110th Street. Take Exit 410 and turn north, which will be right. Turn right at the 2<sup>nd</sup> opportunity, which will have a guard house with a gate. It is just past the red star in the picture above. They should be expecting you and direct you to the lot we are using (highlighted in red above). The lot highlighted in yellow is the lot in which you may park tow vehicles, etc. Note: lots may change if raining.